

Writing Our Story this Year

Friday 30th August 2024

Dear families,

We hope you have had a wonderful summer so far and are looking forward to all the new beginnings that September involves.

We have been busy working with the teams preparing our "Village" for us and are so excited about opening in our community for the first time.

This letter is to communicate the logistics about the coming week with you. In following communications you will hear from our wider team.

As expected, our **Reception, Year 1 and Year 7** pupils will join us on **Wednesday 4th September** to begin their new school phases. Unless **primary pupils** have booked Breakfast Club provision, we will welcome them onto site from 8:30am for an 8:40am start. **Secondary pupils** are welcome onto site from 8:15am. Primary pupils finish at 3:15pm (families are welcome on site from 3:10pm) and secondary pupils finish at 4:00pm.

Year 8 will rejoin us on **Friday 6th September** with our usual finish time of 2:00pm.

Nursery and pre-school families have details of their transition arrangements and start dates as these vary. If you have any questions about their start day please contact nursery@matfordbrook.academy.

Please read on for all starting information.
Best wishes, Hannah

Transport

Accessing
MBA

Lunches /
allergens

Admissions /
pupil info

Equipment

WELCOME

Transport

We are delighted that Devon have announced a bus service to Matford Brook Academy from Exminster. This comprises of an initial free temporary service for the duration of Trood Lane's closure and will be followed by an adaptation to the B route when Trood Lane reopens (which will be chargeable or covered by pupil bus passes).

We understand all families entitled to a bus pass have been contacted about this service but please contact schooltransportservicequeries-mailbox@devon.gov.uk if you believe contact should have been made with you.

Although we continue to liaise with the local authority and are grateful to our governors, local councillors and families for working to share the need for transport, we cannot organise bus passes and so politely request you use the above contact to ascertain your child's school transport entitlement or to get further information regarding school transport options.

Stagecoach school bus

Exminster to Matford Brook Academy

with effect from 4th September 2024

From 4th September a Stagecoach bus will operate between Exminster and Matford Brook Academy.

Until Trood Lane is complete and open, a temporary Stagecoach school bus will operate between Exminster and the school, for students only. This will operate to the timetable shown below and no fares will be charged during this period.

EXMINSTER - MATFORD BROOK ACADEMY

Temporary school bus until Trood Lane opens

Matford Brook Academy School Days only

EXMINSTER, Royal Oak	0805	
GARRISON ROAD, for Matford Brook Academy	0820	
	F	M-Th
GARRISON ROAD, for Matford Brook Academy	1410	1610
EXMINSTER, Royal Oak	1425	1625
CODE:	F - FRIDAY ONLY	
	M-Th - MONDAY TO THURSDAY ONLY	

Operated by Stagecoach South West

This service is financially supported by Devon County Council

When Trood Lane is complete, journeys on Stagecoach service B will divert via the school at start and finish times, instead of the above. Fares will be charged on this service to anyone without a Devon County Council bus pass.

Opening in our community is the chapter of our story we have been desperate to write. Bearing our community in mind, it is vital that - as we open - we consider the kindest ways of getting to school which ensure our pupils arrive safely and minimal disruption is caused to our neighbours and the building teams who are so busy readying our longer term sites.

We have several requests to allow this to happen:

- One way guidance around the Matford Brook estate
- No stopping/no waiting regulations
- Promotion of active travel routes and lift sharing
- Public transport options
- Prioritisation of local parking for primary families
- Management of site traffic

We are working at pace with a variety of stakeholders to determine off-road parking for staff and subcontractors working on the Matford Brook Academy sites. These will not be ready for next week and so there will be high vehicle levels in the community.



We are communicating with staff and subcontractors as well as you and are encouraging courteous parking. During the first days school is open you will see high levels of staff from our Trust and School supporting parking measures and traffic management. We aim to set up the most child-friendly, kind and community focused measures possible. If you have any suggestions for how they may be improved, please share your ideas. We are aware that setting up good habits can be a process which involves some editing.

One-way guidance

On entry to the Matford Brook estate, we ask that cars proceed along Ellacott Road, rather than turning into Garrison Road immediately.

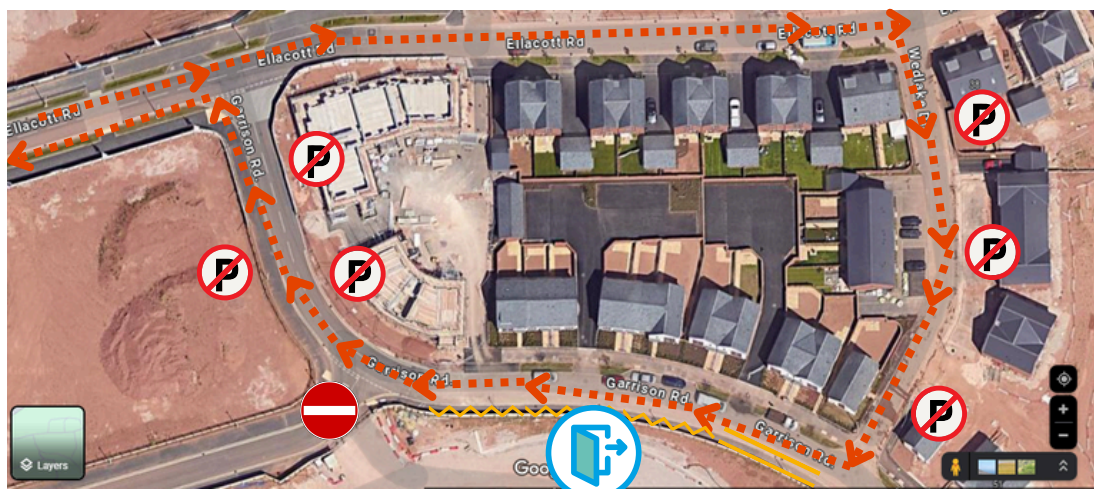
Cars should then turn right into Wedlake Drive and drive up to Garrison Road. Please be aware of raised ironworks in Wedlake Drive. No members of the MBA community except residents should park in Wedlake Drive.

Cars should then turn into Garrison Road. For cars bringing secondary age pupils, pupils can be dropped on the double yellow lines/coned areas as long as the car is leaving immediately after dropping pupils.

For primary aged pupils or those dropping pupils who require accompanying to the site entrance, drivers should park courteously on areas of Garrison Road without yellow markings or cones. We will be asking subcontractors and staff to leave this space for the families of our youngest pupils (2-6 year olds).

Upon leaving, cars should proceed along Garrison Road and turn left into Ellacott Road to leave the estate.

The spur road leading to the permanent site and the section of Garrison road which rejoins Ellacott Road will be used frequently for site traffic. They should **not** be used for parking.



~~~~~ No stopping

==== No waiting



School entrance



No entry



No parking except residents

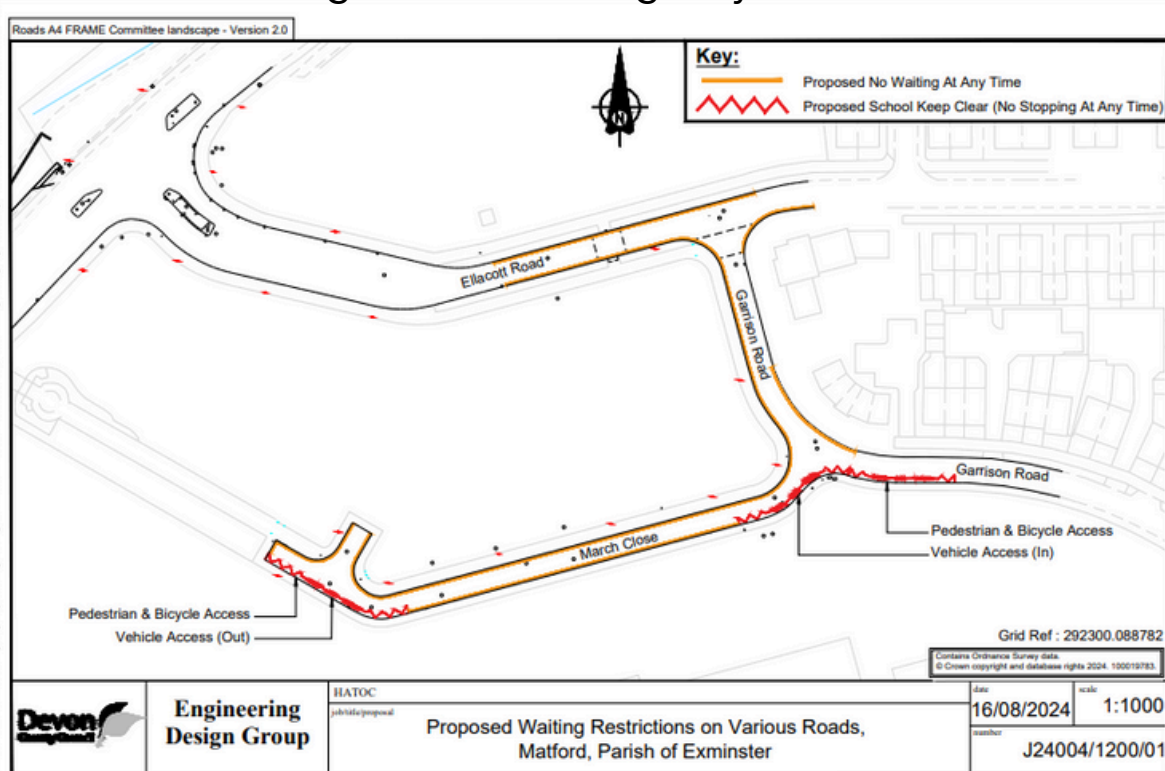
-----> Car direction

# No stopping / waiting

Devon County Council have shared this update with us:

“Devon County Council (DCC) have been preparing for the school for a number of years and delivering infrastructure to support its construction and use. It is hoped the construction of new signalised crossings and the new pedestrian cycle bridge over the A379 will encourage the uptake of sustainable and active travel options to and from school. In addition to this DCC have worked with Stagecoach to provide a bus service to the new site from Exminster at the start and end of the school day.”

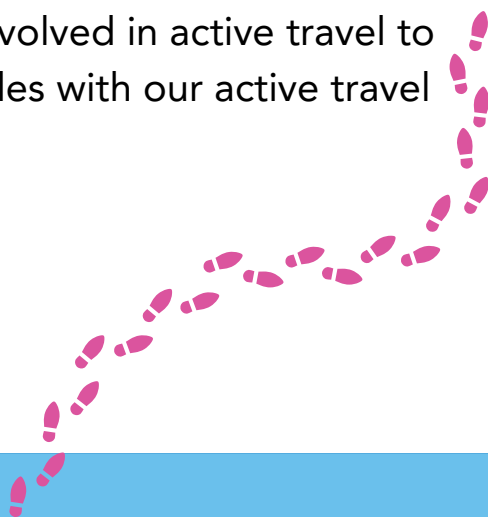
“DCC (as the Highway Authority) have implemented traffic restrictions ahead of the school opening to ensure these safe routes are maintained for those walking and cycling to school from Day 1. The restrictions recently implemented can be seen on the plan attached. Further guidance on walking and cycling can be found on the Travel Devon Website including top tips for cycling and walking to school: home - Travel Devon Information on School Keep Clear Markings and parking near schools can be found on the Devon and Cornwall Police website: Parking outside schools | Devon & Cornwall Police (devon-cornwall.police.uk) Various departments within DCC will be attending site within the first few weeks to see how parents are interacting with the new highways in the area.”





# Active travel/Public transport

If you live locally, please walk to school, cycle or scoot. We will be looking for excellent examples of active travel to include in awards celebrations and for pupils involved in active travel to school to take on pupil leadership roles with our active travel consultants.



## Site traffic

Our building partners are invested in keeping your children safe. They have shared quiet traffic times with their delivery contractors to minimise site traffic when our pupils will be arriving at and departing from school.

There is still likely to be a high volume of traffic so please do talk to your child about road safety and we will do the same.

We remain incredibly grateful to all the stakeholders involved in delivering our school site for their support.



# Lunches & Allergens



From Wednesday 4th - Friday 6th September there will not be hot school meals available so please send your child with a packed lunch.

Prepared packed lunches will be available for pupils in receipt of Free School Meals (including Reception and Year 1 pupils).

Free School  
Meal children  
only

These must be booked by Monday 2nd  
September via this link.



Families of all  
children

Don't forget to complete your allergen/  
medical form even if your child has none



Details about booking school dinners from Monday 9th September will follow in our communication next week. In advance, please note that **every child's meal option** - be it school dinner or home packed lunch - will need recording through MCAS weekly.

## Admissions and Pupil Information



For new families joining us please remember to check that details are up to date on your child's admissions form.

For our existing families please ensure that your data collection information is up to date in MCAS.

For enquiries with this process, or if you can't update any aspect of the form, please email [info@matfordbrook.academy](mailto:info@matfordbrook.academy) with your information

# Equipment - secondary

Please find a link to the [uniform and equipment list](#) on our website which will provide a reminder for our secondary pupils about what they need to bring to school.

We will be selling “tuff bags” to families but the order of these has been delayed by the manufacturer. We will provide, free of charge, a temporary alternative until the correct “tuff bags” have arrived and are ready to purchase. Your child will be given their temporary “tuff bag” next week.

